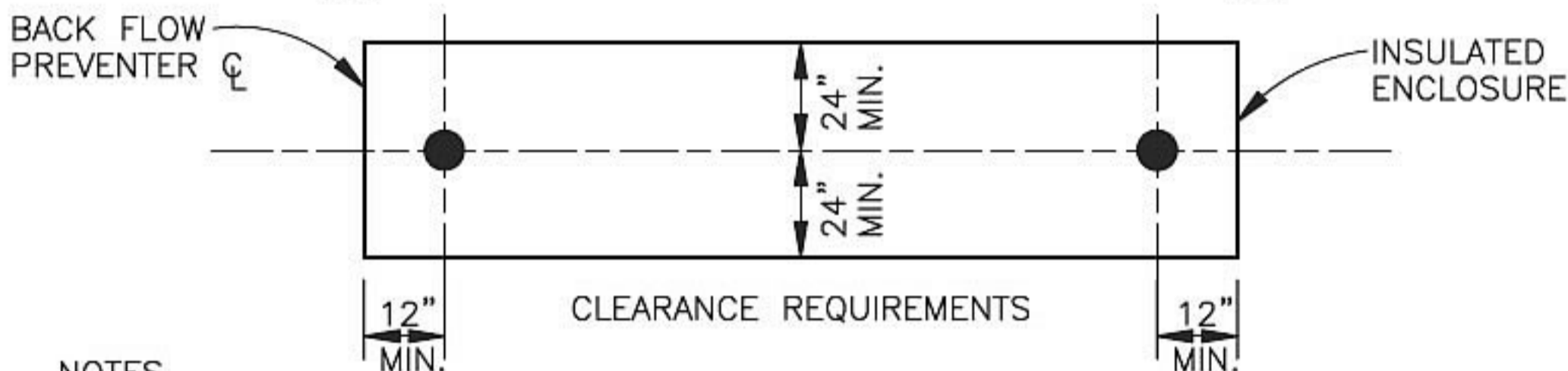
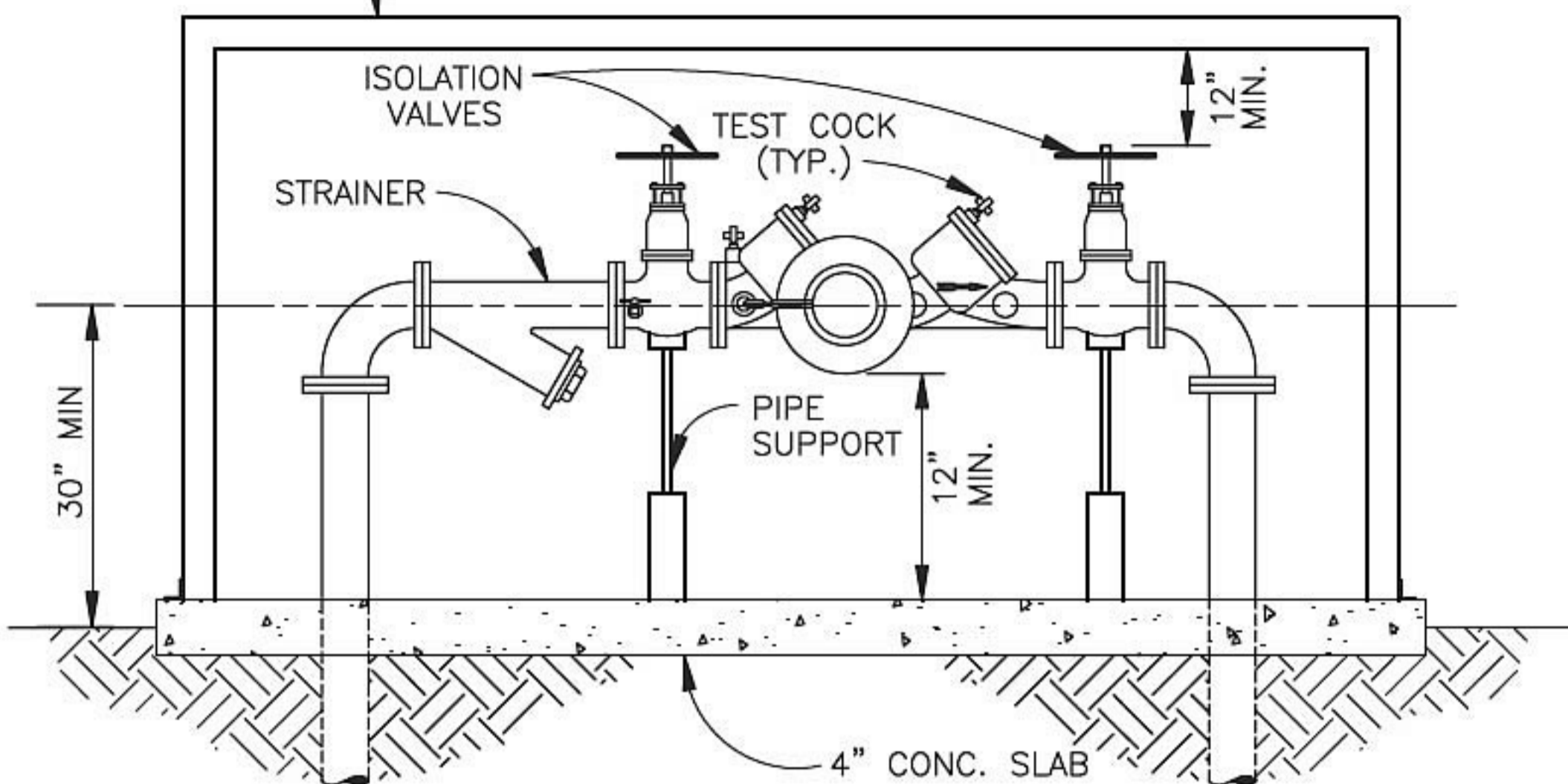


INSULATED ENCLOSURE



NOTES

1. DRAWING NOT TO SCALE.
2. APPROVED BACK FLOW PREVENTERS, MANUFACTURER AND MODEL: WATTS MODEL 909, WILKINS MODEL 975.
3. APPROVED INSULATED ENCLOSURE MANUFACTURERS: HOT BOX, AND HYDROCOWL INSTALLATION OF INSULATED ENCLOSURES SHALL BE IN ACCORDANCE WITH THE MANUFACTURER'S RECOMMENDATIONS. HEATERS ARE RECOMMENDED TO PREVENT FREEZE UP.
4. INSULATED ENCLOSURE MUST HAVE A DRAIN PORT APPROPRIATELY SIZED TO ALLOW DISCHARGE OF WATER IN THE EVENT THE RPZ RELIEF VENT OPENS.
5. PERMITS, PLAN APPROVALS, AND INSPECTIONS MUST BE OBTAINED AND SCHEDULED PRIOR TO WORK THROUGH THE CITY OF COVINGTON, GEORGIA CROSS-CONNECTION CONTROL PROGRAM MANAGER BY CALLING (770) 385-2085
6. FITTINGS AND PIPE INSIDE THE ENCLOSURE SHALL BE FLANGED DUCTILE IRON. UNFLANGED PIPE MUST BE MJ.
7. ISOLATION VALVES SHALL BE RESILIENT WEDGE, NON-RISING STEM, GATE VALVES. WHERE REQUIRED BY FIRE OR OTHER CODE REQUIREMENTS, RESILIENT WEDGE OS&Y VALVES SHALL BE USED.
8. PIPE SUPPORTS REQUIRED

**CITY OF COVINGTON  
CROSS-CONNECTION CONTROL PROGRAM**

**RPZ BACKFLOW PREVENTER SIZE 3" - 10"  
ABOVE GROUND TYPICAL INSTALLATION**

STANDARD  
No.  
**03**

FEB. 1996